

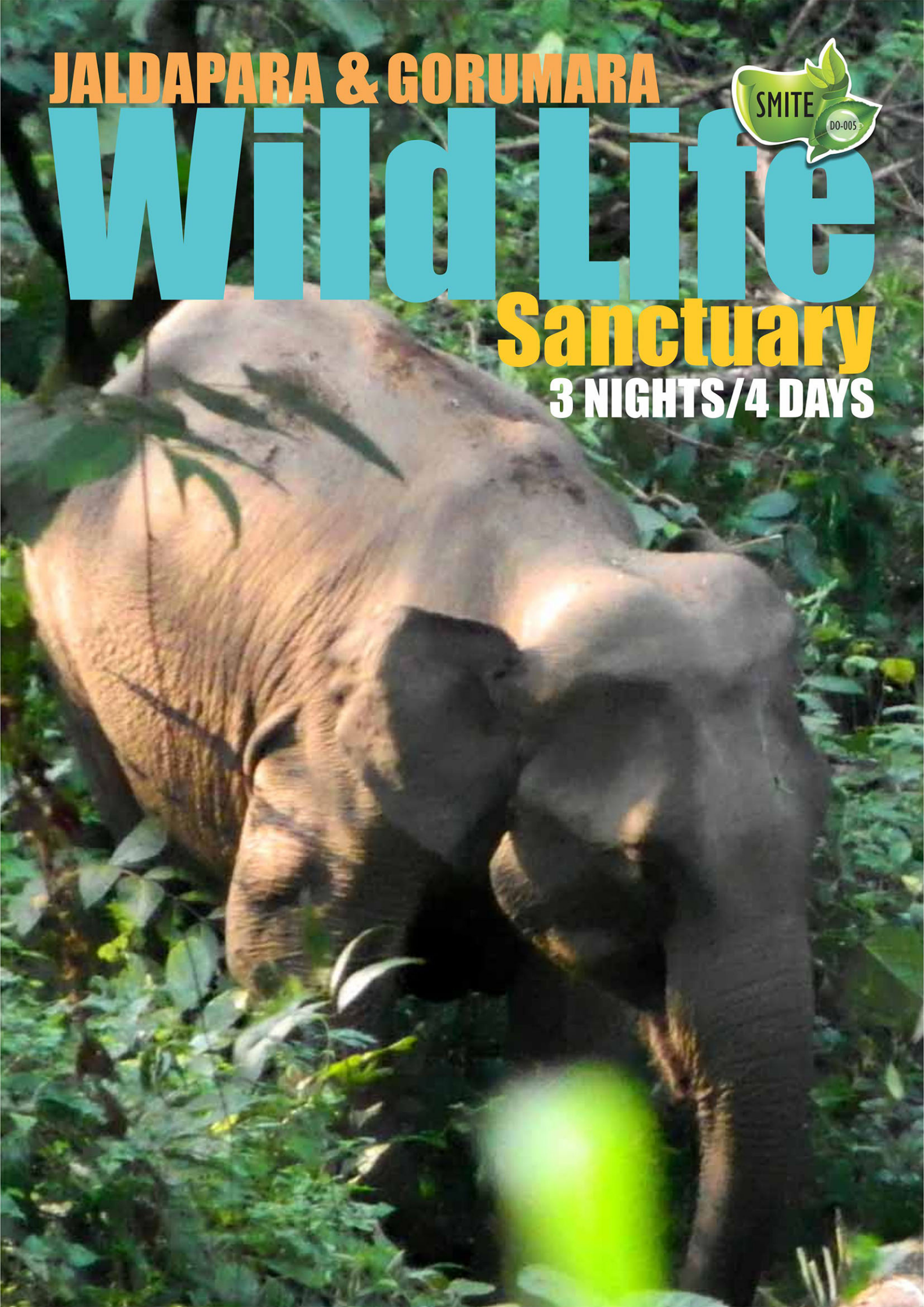
JALDAPARA & GORUMARA



Wild Life

Sanctuary

3 NIGHTS/4 DAYS





NJP/BAGDOGRA- LATAGURI (131 KMS/4 HRS)

- Reception at NJP railhead / Bagdogra airport. Drive to Mongpong (35 kms.), a quiet place on the bank of river Tista. The forest rest house at Mongpong offers a panoramic view of Mahananda Wild Life Sanctuary. Enjoy your break at Mongpong watching colourful birds. A refreshing drive through tea gardens and forests takes you to Lataguri (55kms. from Mongpong). Lataguri is a small Dooars town close to Gorumara National Park.
- Overnight at Lataguri.



GORUMARA EXCURSION

- Visit to Gorumara forest in the morning. Back to the resort for lunch. After lunch optional evening walk to Khagrijan through nature trail.
- Overnight at - Lataguri.

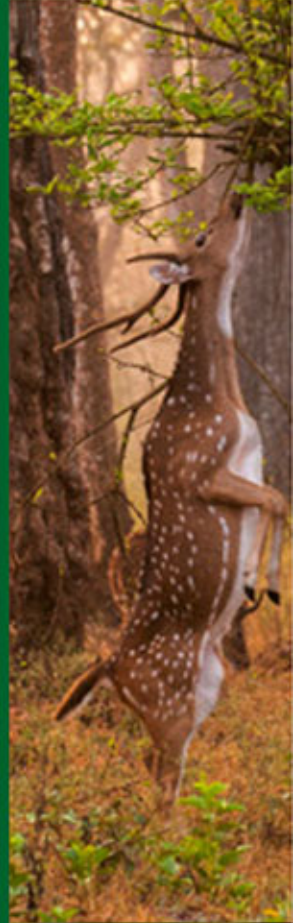




LATAGURI-JALDAPARA

(88 KMS/3 HRS)

- Drive to Jaldapara via Chapramari forests. Check in the hotel / forest Bungalow at Jaldapara. Evening at your disposal.
- Overnight at Jaldapara.



JALDAPARA-NJP

(124 KMS/4 HRS)

Morning drive inside the forest. Elephant ride inside Jaldapara grassland for viewing the famous one horned Rhino. Return to hotel for lunch. After lunch drive to Siliguri / NJP. Tour concludes.

