

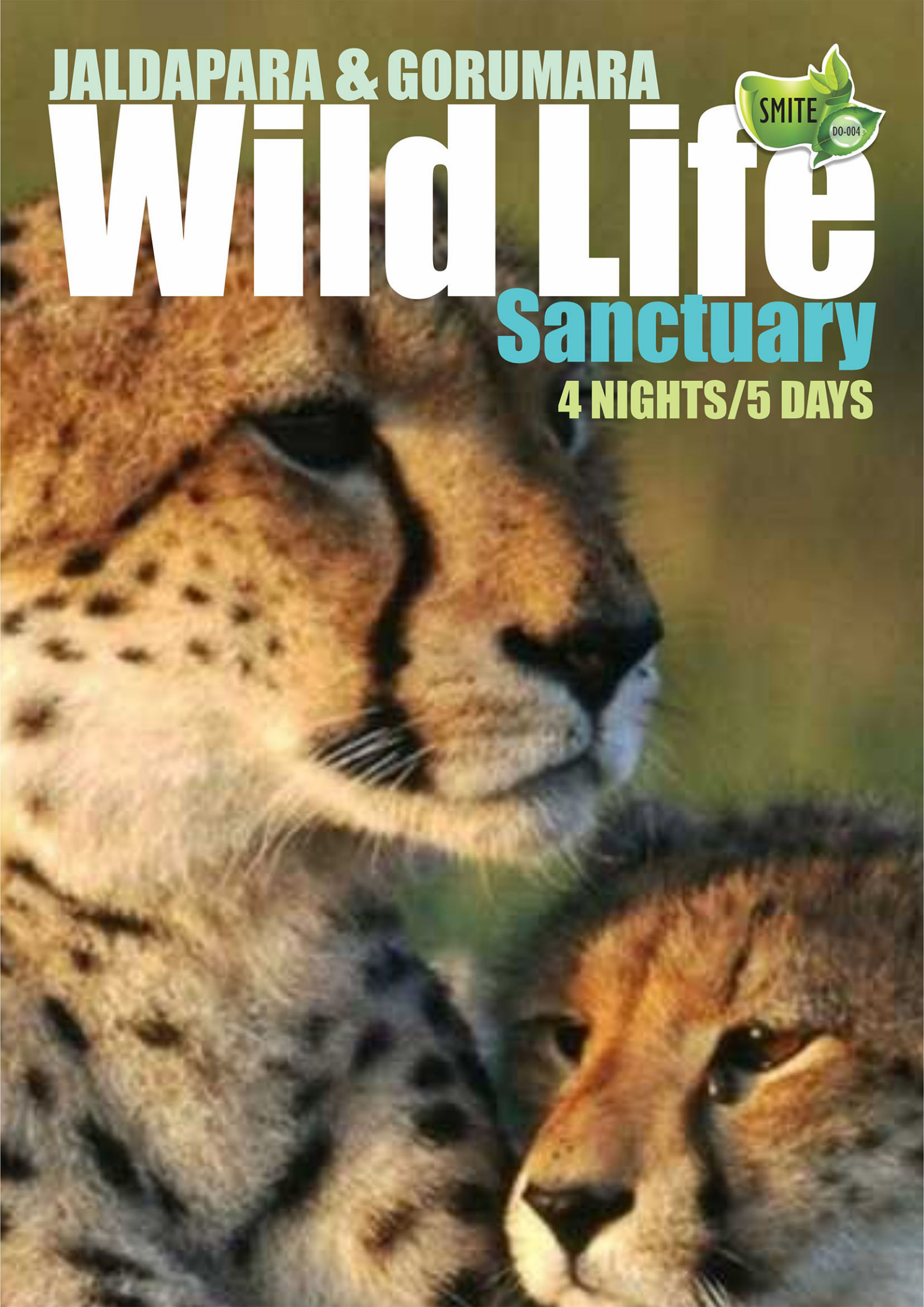
JALDAPARA & GORUMARA

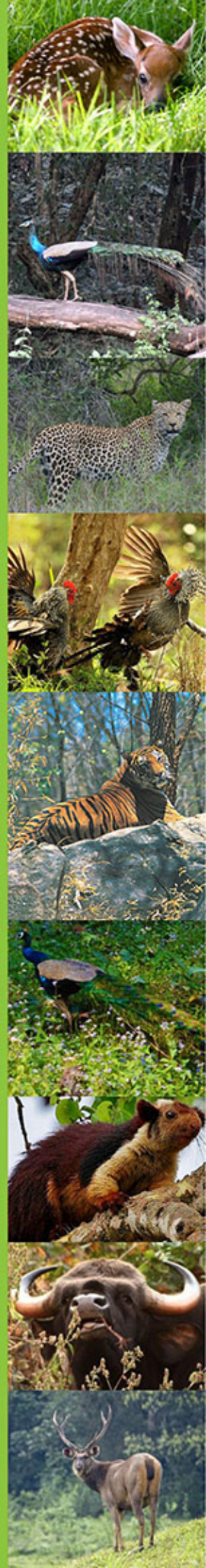


Wild Life

Sanctuary

4 NIGHTS/5 DAYS





NJP-SAMSING (93 KMS/3 HRS)

- Reception and breakfast at NJP. Drive to Samsing through tea gardens.
- Overnight stay at Samsing.



SAMSING – LATAGURI (38 KMS/1 HR)

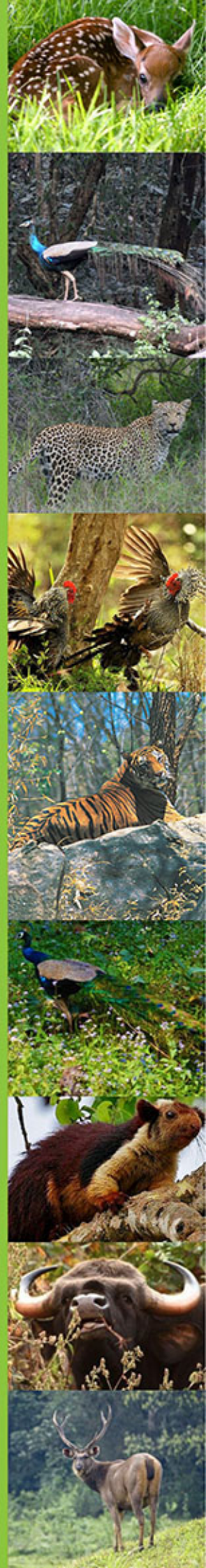
- After breakfast visit to Mouchaki beat for bird watching. Drive to Gorumara N.P. Lunch at Lataguri. Journey through the forest for wild life viewing.
- Overnight stay at Lataguri.



LATAGURI-HOLLONG (86 KMS/3 HRS) / MADARIHAT (80 KMS/3 HRS)

- Breakfast- drive to Jaldapara W.L.S- Lunch at Madarihat- evening trip inside forest
- Overnight stay at Hollong/ Madarihat.





HOLLONG / MADARIHAT TO COOCHBEHAR (58 KMS/2 HRS)

- Early morning elephant ride inside Jaldapara N.P. - breakfast- Drive to Phuentsholing (Bhutan) - Lunch at Phuentsholing - Drive to Coochbehar- visit to the ruin of Nal Raja fort on the way-
- Overnight stay at Rasikbil (Coochbehar).



COOCHBEHAR-NJP (136 KMS/4 HRS)

- Breakfast- drive toNJP- en route visit to Chapramari Wild life Sanctuary- Lunch at Malbazar- See off at NJP Station.

